

WIRING DIAGRAM

Project		Technical Data	
Order	OVF2600040-1000	Operating Voltage	400 [Vac]
Customer order	4500227684	Low-Voltage	24 [Vac]
Item Code	00C0011871-20	Frequency	50 [Hz]
Description	KAUC2363.5/ 6 Q OU A /V Z/PS45-RAL7016-BALC-MRQ	Total Current	39 [A]
Electrical Drawing	E0C0011871-20	Total Power supply	23,4 [kW]
Date	20/02/2026		
		Protection class	IP55

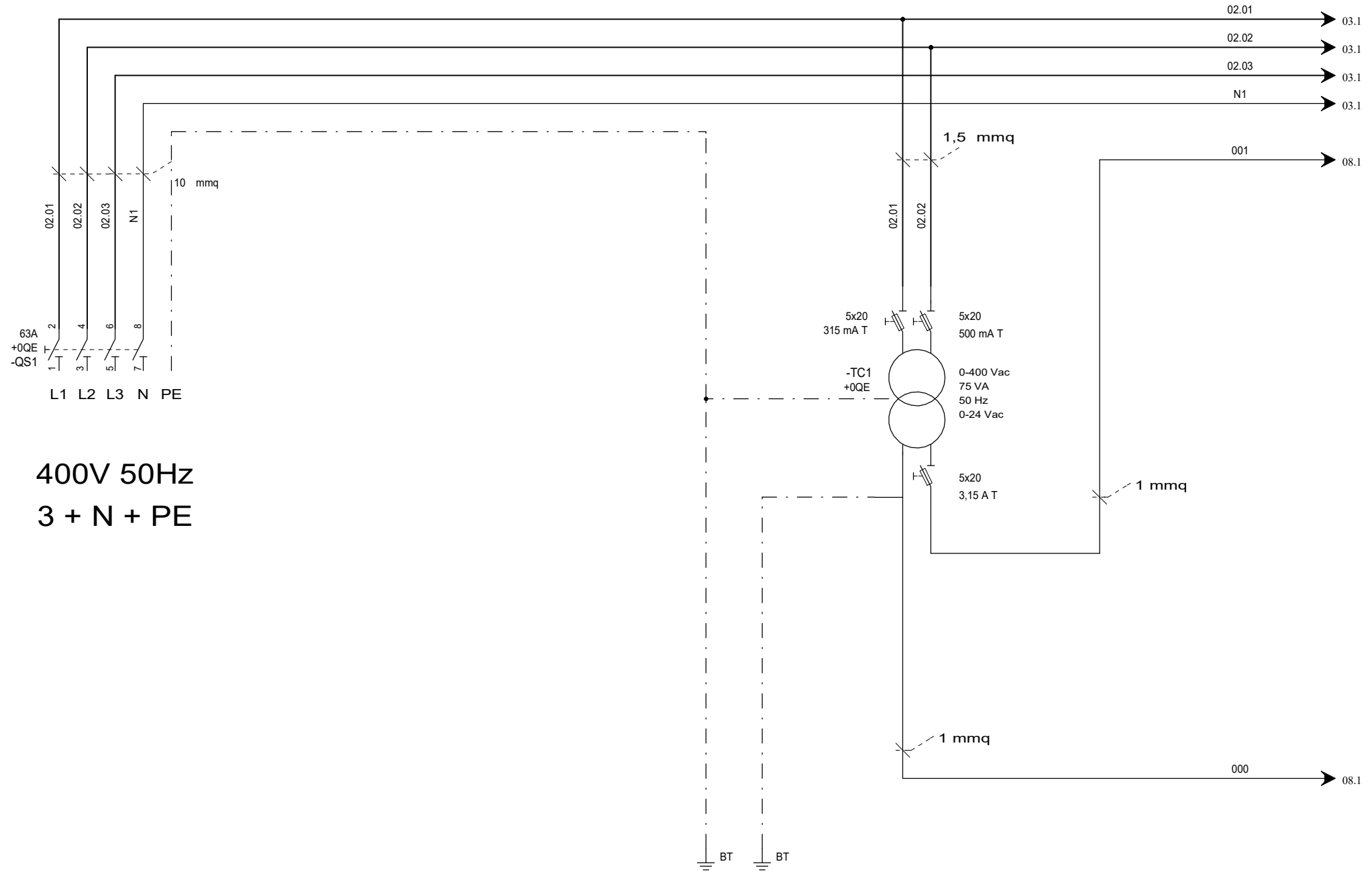
Comments Power line protections must be provided by the user as provided by regulations in force at the place of installation.

An differential circuit breaker mounted before this switchboard is recommended for proper installation in TN and TT system as per EN 6024-01, the PE conductor must be earthed.

In IT systems, the unit must be protected by the customer against indirect contact by continuous insulation monitoring device as per IEC60364-4-41.

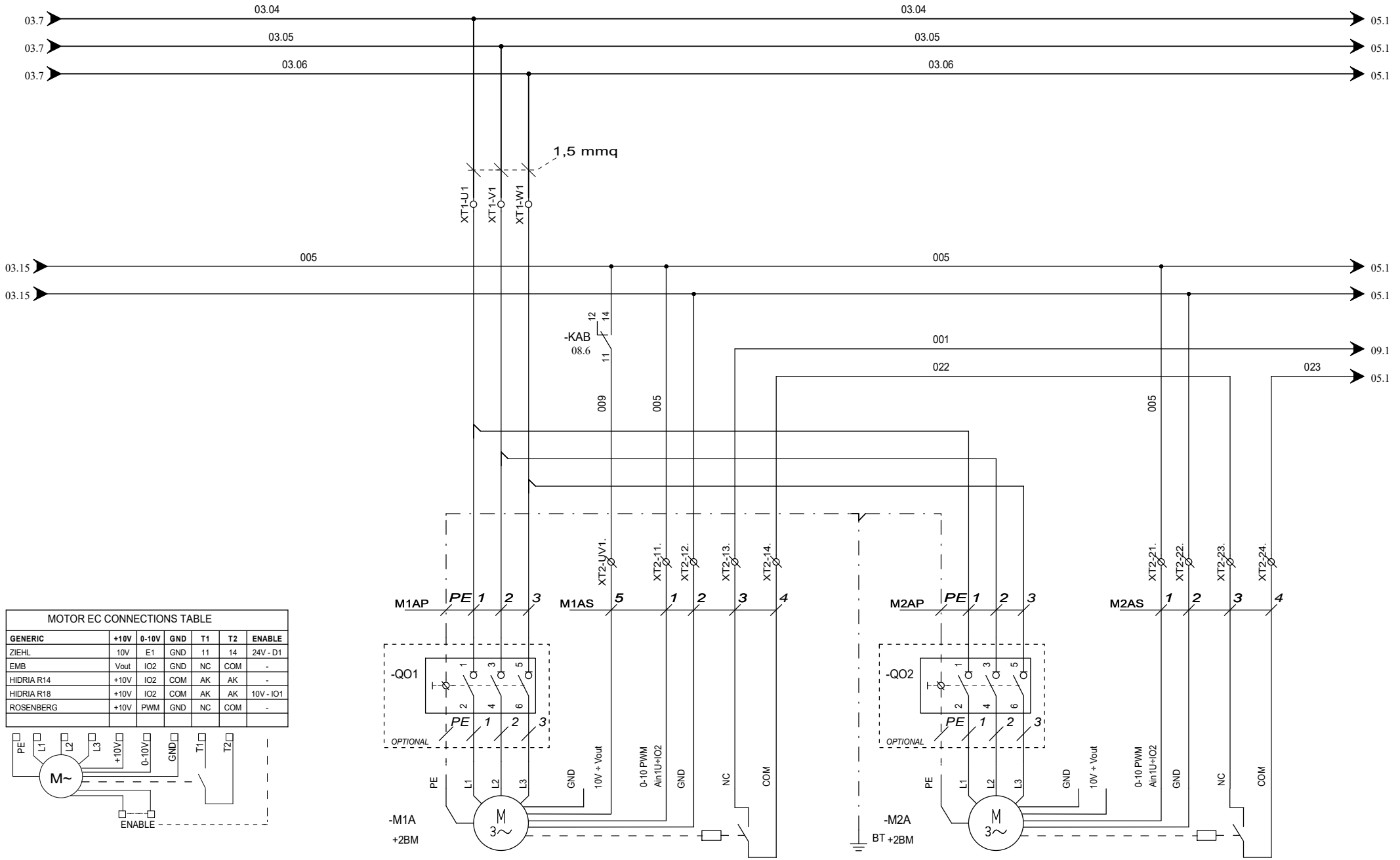
0		20/02/2026	A B	A G	
Review	Modifications	Date	Prepared	Verified	

IT IS FORBIDDEN TO HAND IN THIS DOCUMENT TO THIRD PARTIES, TO COPY IT, TO MAKE USE OF ITS CONTENTS AND TO DISCLOSE IT TO THIRD PARTIES WITHOUT OUR EXPLICIT AUTHORIZATION. A COMPENSATION FOR THE DAMAGES OCCURRED WILL BE ASKED FOR EVERY INFRACTION.ALL RIGHTS ARE RESERVED.



Rev.	Date	Signat.	Modification

Project : CNEC . U . . 45 . . .06.M2.V400F3H50N		Sheet 02
Internal order : 048012732		Of 17
Customer : 0480	Customer order :	01 ◀▶ 03
Title : Power circuit		
Draughtsman : L.L.		Date : 20/02/2026



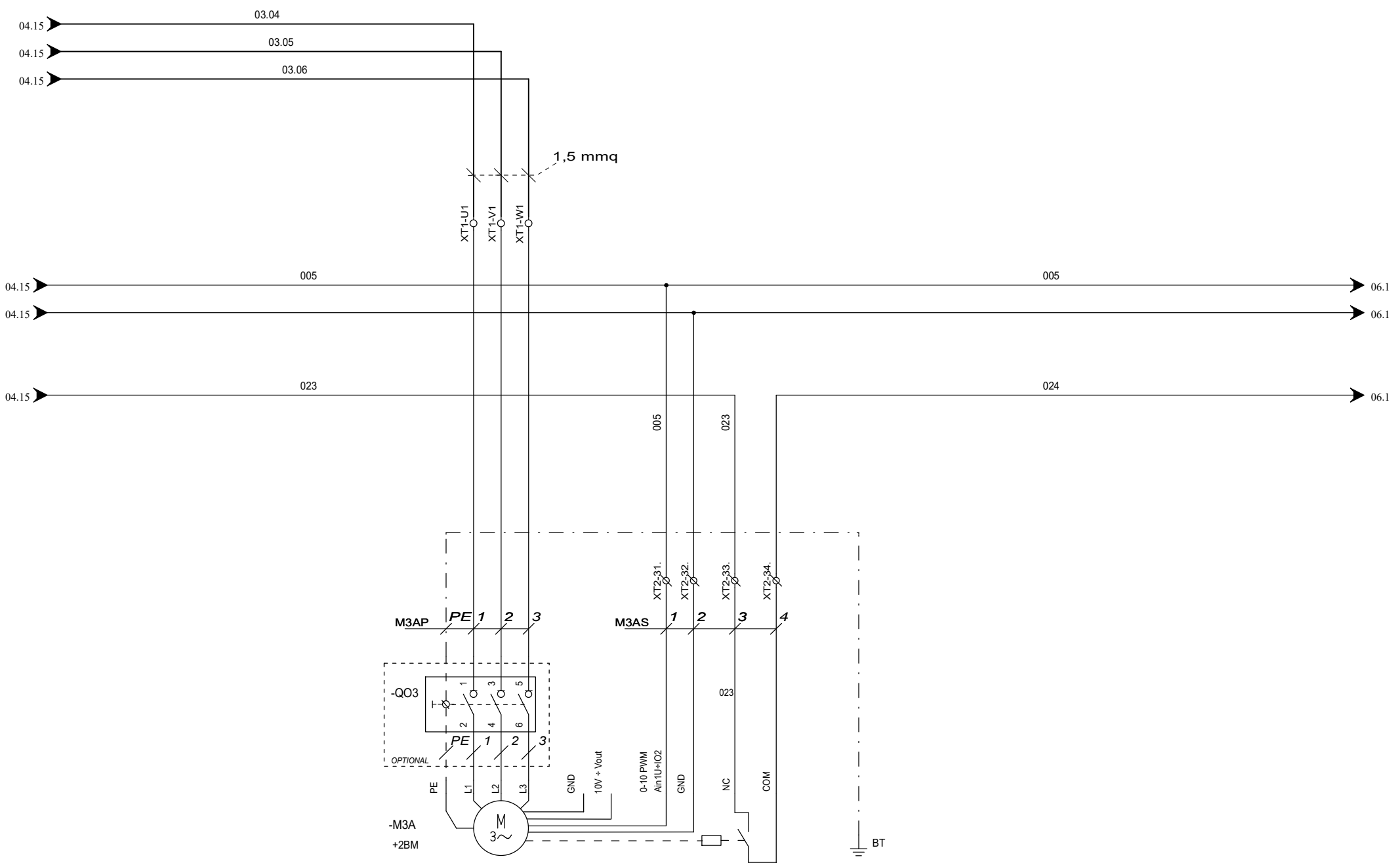
MOTOR EC CONNECTIONS TABLE

GENERIC	+10V	0-10V	GND	T1	T2	ENABLE
ZIEHL	10V	E1	GND	11	14	24V - D1
EMB	Vout	IO2	GND	NC	COM	-
HIDRIA R14	+10V	IO2	COM	AK	AK	-
HIDRIA R18	+10V	IO2	COM	AK	AK	10V - IO1
ROSENBERG	+10V	PWM	GND	NC	COM	-

The schematic shows a three-phase motor (M~) with terminals PE, L1, L2, and L3. It also shows a control circuit with terminals +10V, 0-10V, GND, T1, T2, and ENABLE. The motor is labeled M1A and M2A.

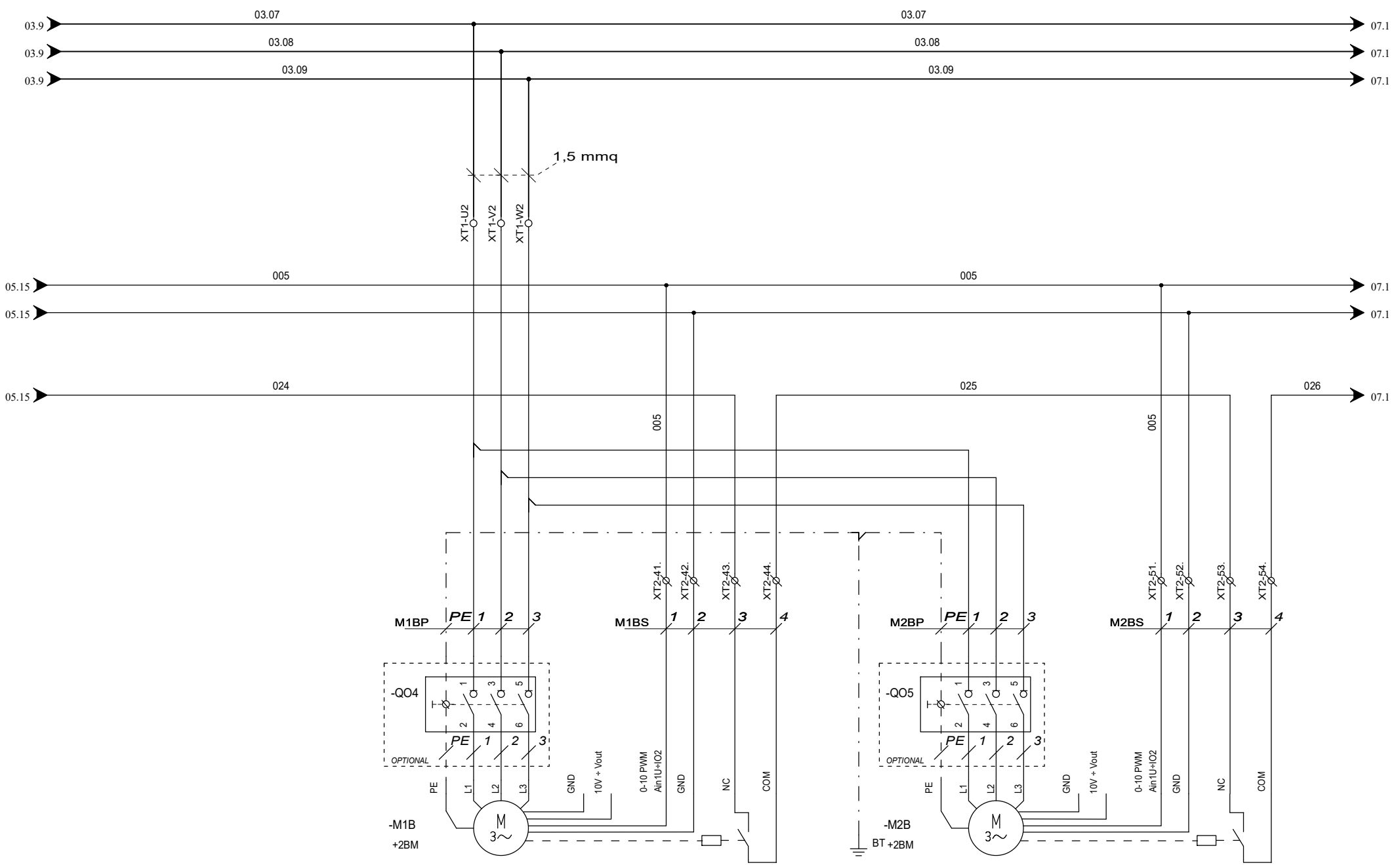
Rev.	Date	Signat.	Modification

Project : CNEC . U . . 45 . . .06.M2.V400F3H50N	
Internal order : 048012732	
Customer : 0480	Customer order :
Title : Power circuit	
Draughtsman : L.L.	Date : 20/02/2026



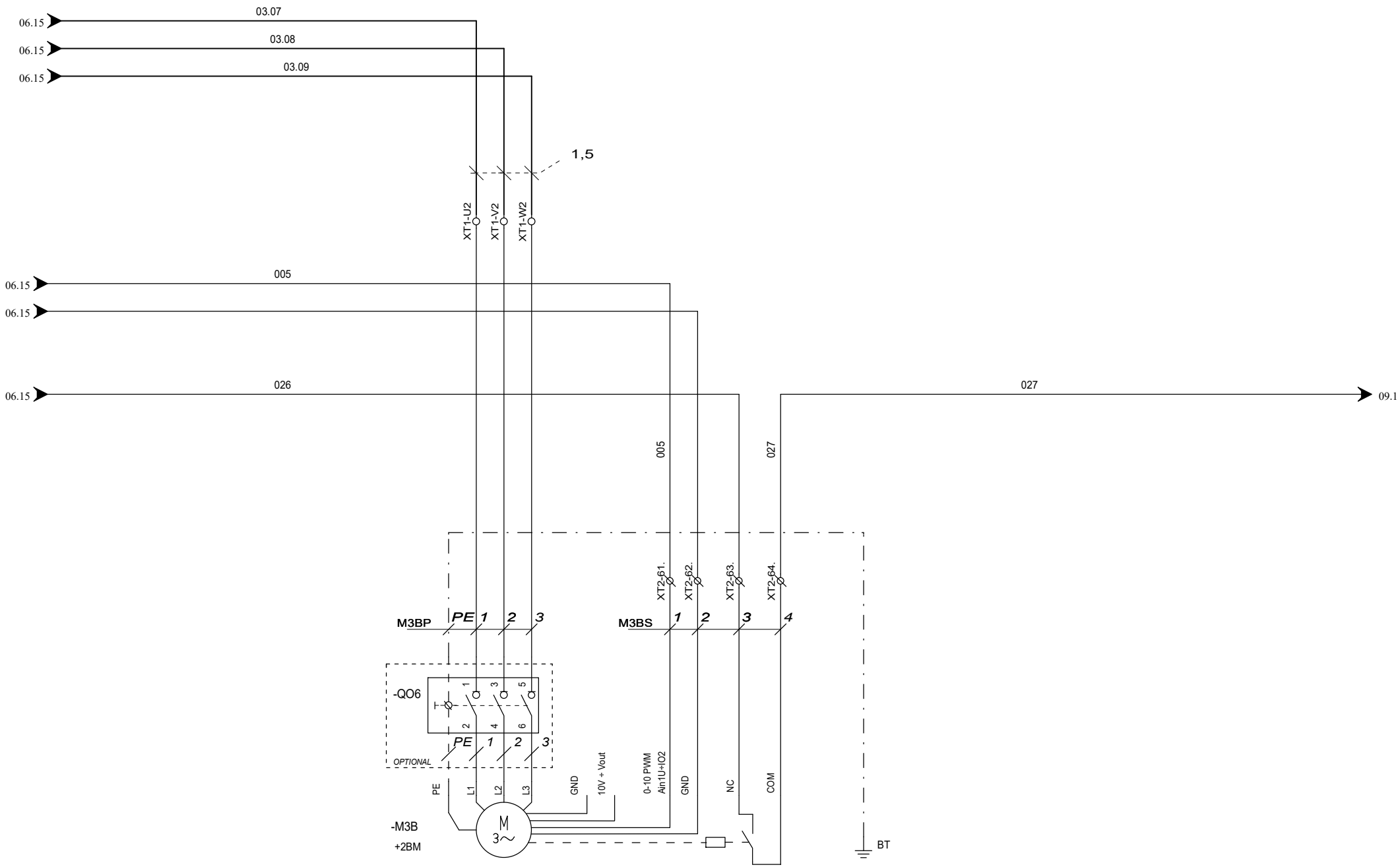
Rev.	Date	Signat.	Modification

Project : CNEC . U . . 45 . . .06.M2.V400F3H50N		Sheet 05
Internal order : 048012732		
Customer : 0480	Customer order :	Of 17
Title : Power circuit		
Draughtsman : L.L.		Date : 20/02/2026



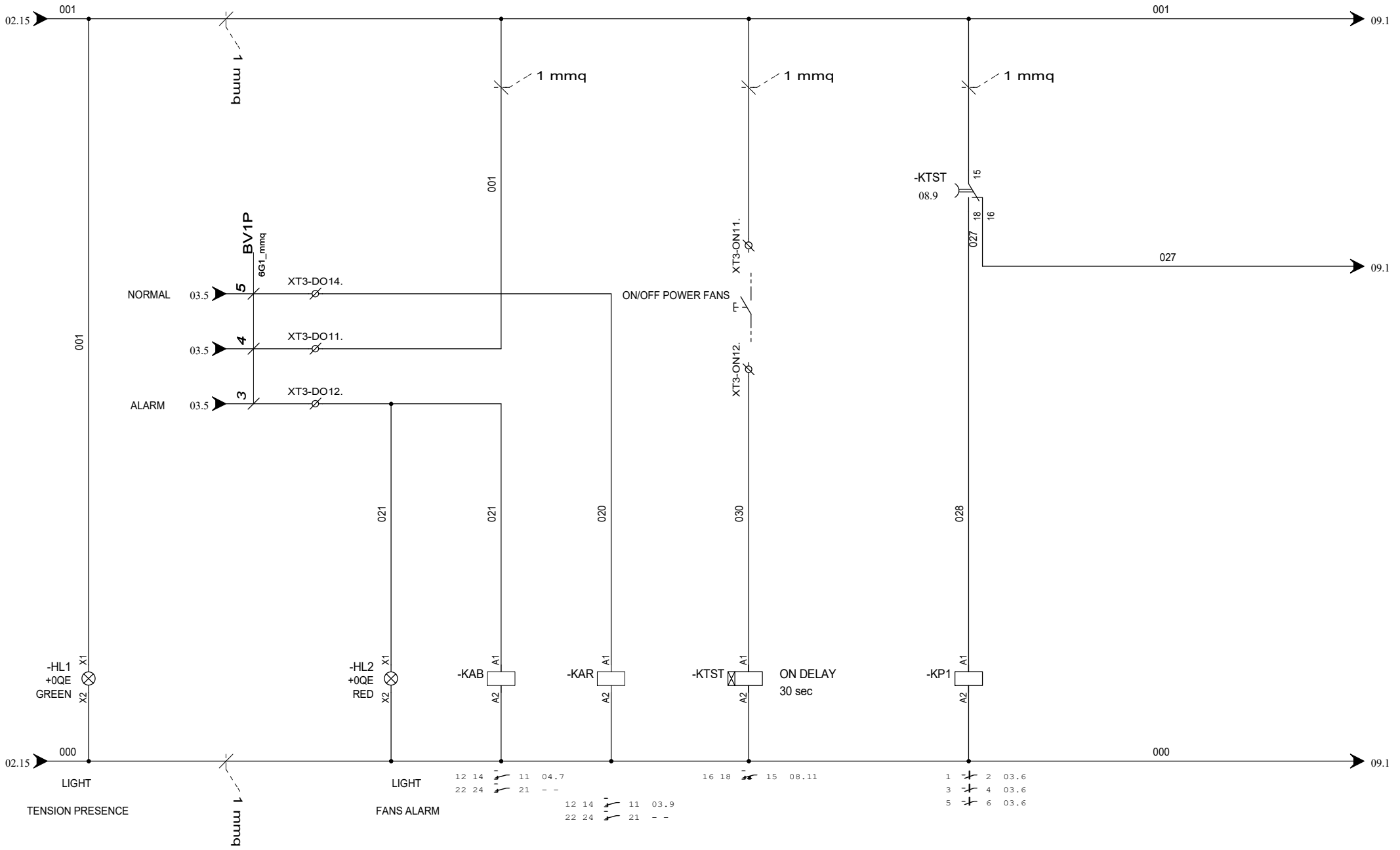
Rev.	Date	Signat.	Modification

Project : CNEC . U . . 45 . . .06.M2.V400F3H50N		Sheet 06
Internal order : 048012732		Of 17
Customer : 0480	Customer order :	05 ◀▶ 07
Title : Power circuit		
Draughtsman : L.L.		Date : 20/02/2026



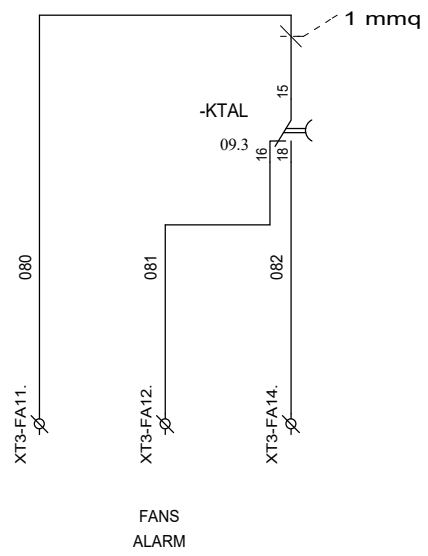
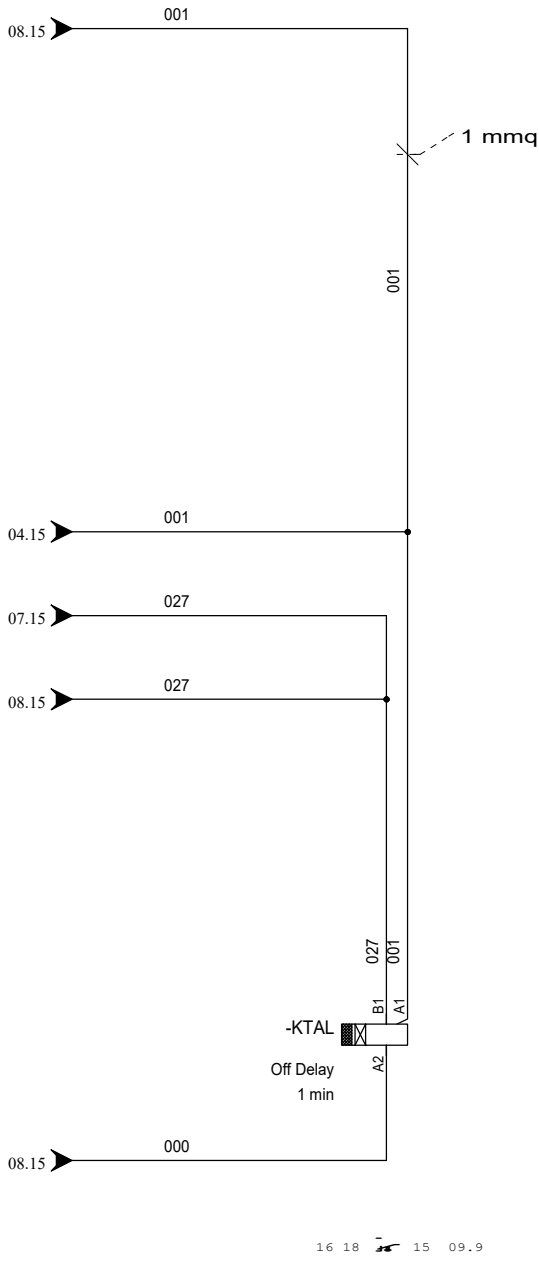
Rev.	Date	Signat.	Modification

Project : CNEC . U . . 45 . . .06.M2.V400F3H50N	
Internal order :	048012732
Customer : 0480	Customer order :
Title : Power circuit	
Draughtsman : L.L.	Date : 20/02/2026



Rev.	Date	Signat.	Modification

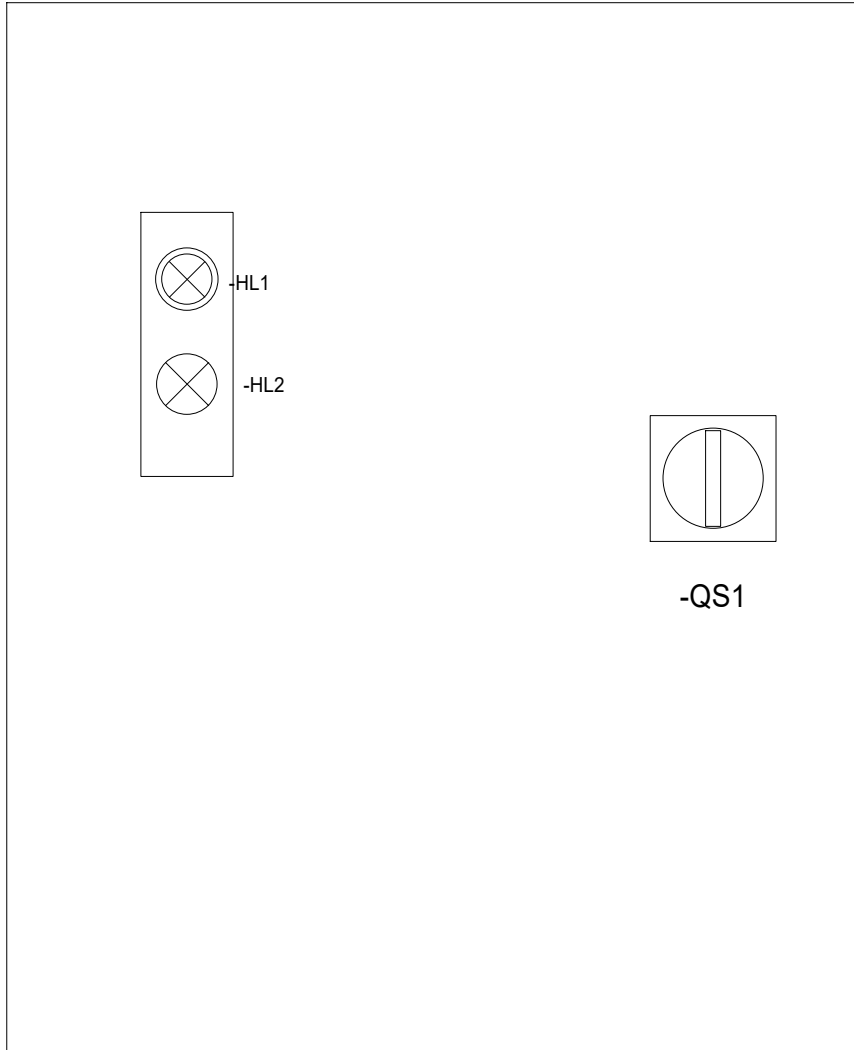
Project : CNEC . U . . 45 . . .06.M2.V400F3H50N	
Internal order : 048012732	
Customer : 0480	Customer order :
Title : Control circuit	
Draftsman : L.L.	
Date : 20/02/2026	



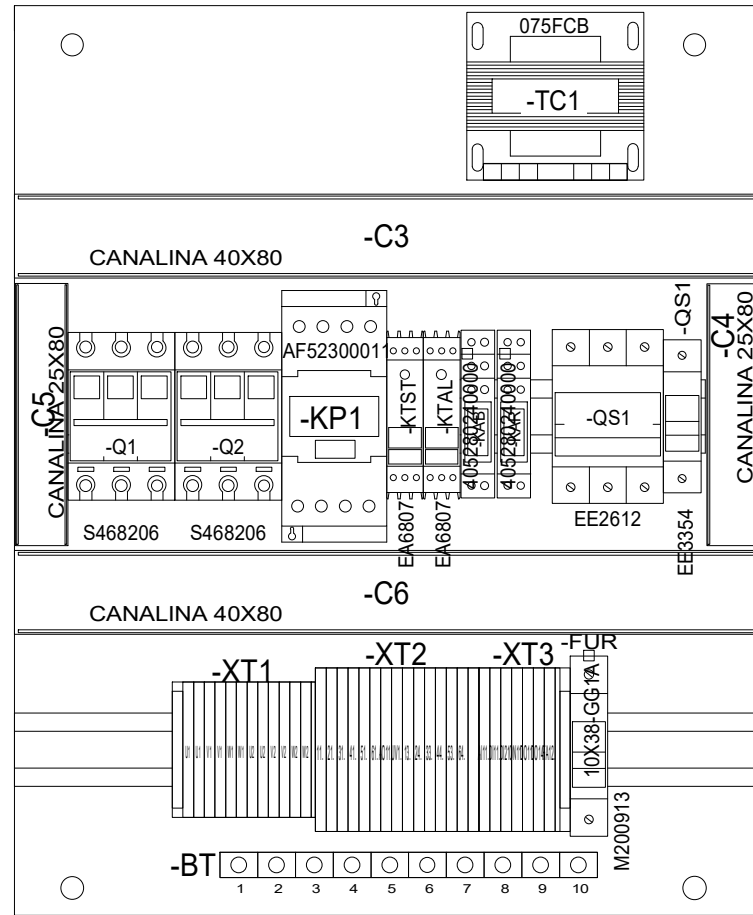
Rev.	Date	Signat.	Modification

Project : CNEC . U . . 45 . . .06.M2.V400F3H50N	Sheet	09
Internal order : 048012732	Of	17
Customer : 0480	Customer order :	
Title : Control circuit		
Draughtsman : L.L.	Date :	20/02/2026
08		10

@DIMENSIONI:405X500X200



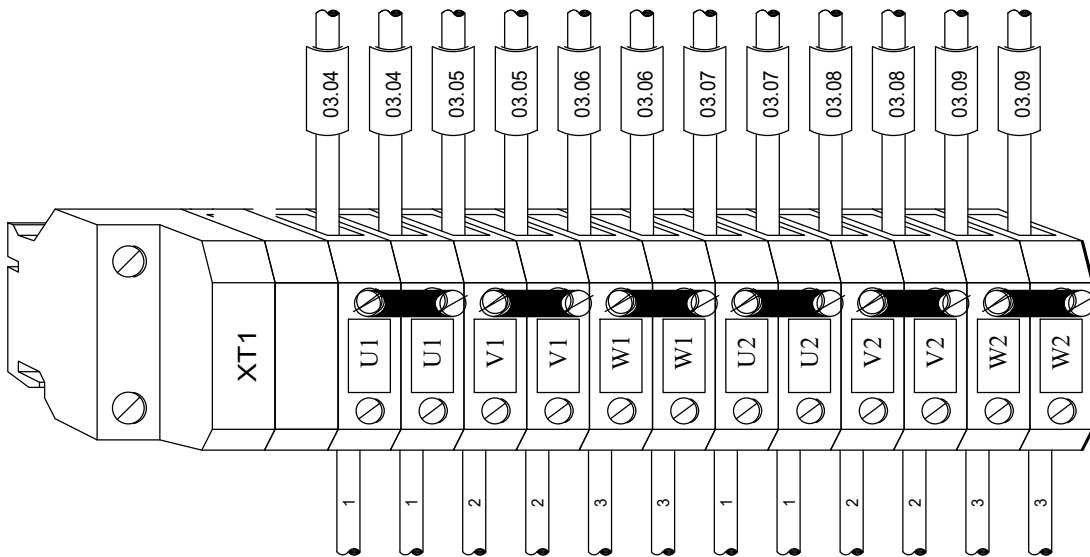
DOOR



ELECTRICALBOARD PLATE

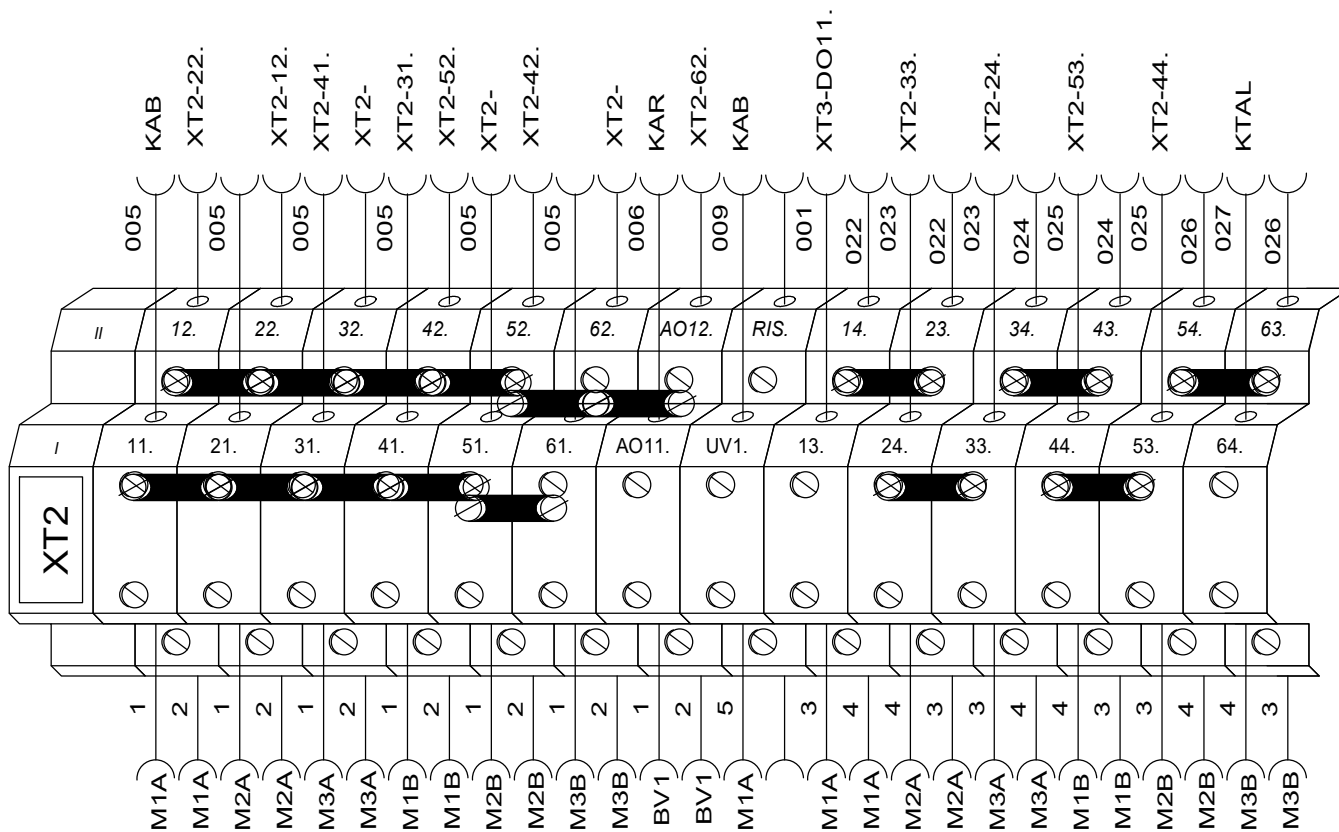
Rev.	Date	Signat.	Modification

Project :	CNEC . U . . 45 . . .06.M2.V400F3H50N	Sheet	10
Internal order :	048012732	Of	17
Customer :	0480	Customer order :	
Title :	Layout		
Draughtsman :	L.L.	Date :	20/02/2026



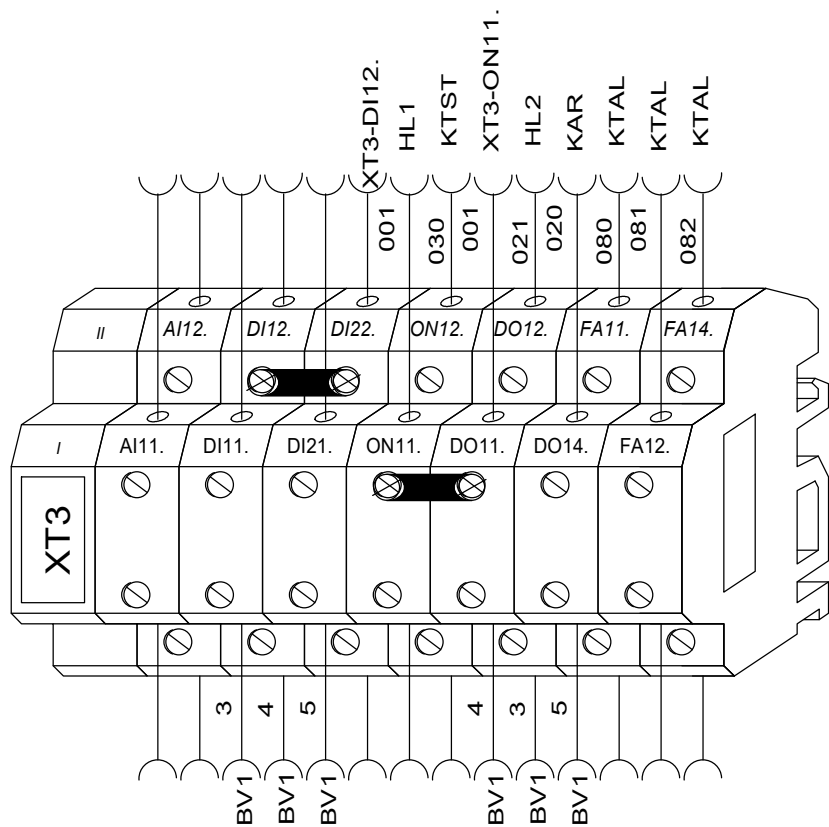
Project :	CNEC . U . . 45 . . .06.M2.V400F3H50N	
Internal order :	048012732	
Customer :	0480	Customer order :
Title :	Terminal board: XT1	
Draughtsman :	L.L.	Date :
		20/02/2026

Rev.	Date	Signat.	Modification



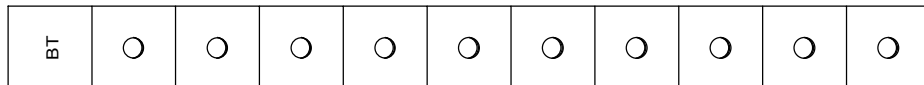
Rev.	Date	Signat.	Modification

Project : CNEC . U . . 45 . . .06.M2.V400F3H50N	
Internal order :	048012732
Customer : 0480	Customer order :
Title : Terminal board: XT2	
Draughtsman : L.L.	Date : 20/02/2026



Rev.	Date	Signat.	Modification

Project : CNEC . U . . 45 . . .06.M2.V400F3H50N	
Internal order : 048012732	
Customer : 0480	Customer order :
Title : Terminal board: XT3	
Draughtsman : L.L.	Date : 20/02/2026



3

7

10

.....

Project : CNEC . U . . 45 . . .06.M2.V400F3H50N	
Internal order : 048012732	
Customer : 0480	Customer order :
Title : Terminal board: BT	
Draughtsman : L.L.	Date : 20/02/2026

Sheet **14**
Of **17**

Rev.	Date	Signat.	Modification

PARTS LIST

Identification	Description	Code	Manufacturer	Location	Amount	Function	Position
BV1	REGOLATORE DI VELOCITA'	CXE/AVC Art.320053 IP54	ZIEHL-ABEGG	2BM	1		03.2
BV1	SONDA DI TEMPERATURA KTY	IKE_38XE25006X05X	ITALCOPPIE	2BM	1		03.2
C3	CANALINA 40X80	04180082	CON	0QE	1		10.-37
C4	CANALINA 25X80	04180080	CON	0QE	1		10.-37
C5	CANALINA 25X80	04180080	CON	0QE	1		10.-37
C6	CANALINA 40X80	04180082	CON	0QE	1		10.-37
FUR	E91HN/32	M200913	ABB	0QE	1		03.3
FUR	FUSIBILE 10X38 1A GG	10X38-GG1A	FUSIBILE	0QE	2		03.3
G2	GUIDA DIN 35X7 FORATA	04180089	CON	0QE	1		10.-37
G3	GUIDA DIN 35X7 FORATA	04180089	CON	0QE	1		10.-37
HL1	LAMPADA SPIA VERDE	800FM-P3	ALLEN BRADLEY	0QE	1		08.2
HL1	PORTACONTATTI 3 ELEMENTI	800F-ALP	ALLEN BRADLEY	0QE	1		08.2
HL1	LED VERDE 24VAC/DC	800F-Q3G	ALLEN BRADLEY	0QE	1		08.2
HL2	LED ROSSO 24VAC/DC	800F-Q3R	ALLEN BRADLEY	0QE	1		08.5
HL2	LAMPADA SPIA ROSSA	800FM-P4	ALLEN BRADLEY	0QE	1		08.5
HL2	PORTACONTATTI 3 ELEMENTI	800F-ALP	ALLEN BRADLEY	0QE	1		08.5
KAB	ZOCCOLO A MORSETTI PER SERIE 40/41/44 2 SC. 1	95P5SMA	FINDER	0QE	1		08.6
KAB	RELE' 2 CONTATTI 24Vac	405280240000	FINDER	0QE	1		08.6
KAB	MODULO DIODO LED VERDE 6"24 V DC	9902902499	FINDER	0QE	1		08.6
KAR	ZOCCOLO A MORSETTI PER SERIE 40/41/44 2 SC. 1	95P5SMA	FINDER	0QE	1		08.7
KAR	RELE' 2 CONTATTI 24Vac	405280240000	FINDER	0QE	1		08.7
KAR	MODULO DIODO LED VERDE 6"24 V DC	9902902499	FINDER	0QE	1		08.7
KP1	AF52-30-00-11 CONT 3P 52A 24-60V AC/DC	AF52300011	ABB	0QE	1		08.11
KTAL	E234CT-MFD RELE' TEMPORIZZATORE MULTIF.	EA6807	ABB	0QE	1		09.3
KTST	E234CT-MFD RELE' TEMPORIZZATORE MULTIF.	EA6807	ABB	0QE	1		08.9
Q1	S203 C25 INTERRUTTORE AUTOMATICO 6KA 3P	S468206	ABB	0QE	1		03.6
Q2	S203 C25 INTERRUTTORE AUTOMATICO 6KA 3P	S468206	ABB	0QE	1		03.8
QS1	SEZIONATORE GENERALE 63A 3P	EE2612	ABB	0QE	1		02.2
QS1	QUARTO POLO SEZIONATORI 80A	EE3354	ABB	0QE	1		02.2
QS1	MANIGLIA LUCCHETTABILE GIALLO/ROSSA	EE3131	ABB	0QE	1		02.2
QS1	SET 4STAFFE INOX FISSAGGIO QUADRI	GW46451	GEWISS	0QE	1		02.2
QS1	ALBERO 6X160MM	EE3230	ABB	0QE	1		02.2
QS1	QUADRO POLIEST.PORTA CIECA 500X405X200	GW46003	GEWISS	0QE	1		02.2
QS1	PIASTRA QUADRO ELETTRICO GW46003 - 355x434	0480057120	PIA	0QE	1		02.2
TC1	TM 75VA f0-f230-f400/0-f24V	075FCB	BOTTER	0QE	1		02.11
TC1	FUSIBILE 5x20 315mA T	5X20-T315MA	FUSIBILE	0QE	1		02.11
TC1	FUSIBILE 5x20 3,15A T	5X20-T3,15A	FUSIBILE	0QE	1		02.11
TC1	FUSIBILE 5x20 500mA T	5X20-T500MA	FUSIBILE	0QE	1		02.11

Rev.	Date	Signat.	Modification	Project : CNEC . U . . 45 . . 06.M2.V400F3H50N	Sheet 15
				Internal order : 048012732	Of 17
				Customer : 0480 Customer order :	
				Title : Material list	
				Draughtsman : L.L.	Date : 20/02/2026

TERMINAL BOARD LIST

Identification	Description	Code	Manufacturer	Location	Amount	Position
BT-1	GROUND BAR	04180095	CON	0QE	1	14.3
BT-10	GROUND BAR	04180095	CON	0QE	1	14.8
BT-2	GROUND BAR	04180095	CON	0QE	1	14.3
BT-3	GROUND BAR	04180095	CON	0QE	1	14.4
BT-4	GROUND BAR	04180095	CON	0QE	1	14.4
BT-5	GROUND BAR	04180095	CON	0QE	1	14.5
BT-6	GROUND BAR	04180095	CON	0QE	1	14.5
BT-7	GROUND BAR	04180095	CON	0QE	1	14.6
BT-8	GROUND BAR	04180095	CON	0QE	1	14.7
BT-9	GROUND BAR	04180095	CON	0QE	1	14.7
P1	FBS 2,5 BRIDGE 2	3030161	PHOENIX	0QE	1	11.4
P10	FBS 2,5 BRIDGE 2	3030161	PHOENIX	0QE	1	12.9
P11	FBS 2,5 BRIDGE 2	3030161	PHOENIX	0QE	1	12.7
P12	FBS 2,5 BRIDGE 2	3030161	PHOENIX	0QE	1	12.8
P13	FBS 2,5 BRIDGE 3	3030174	PHOENIX	0QE	1	12.5
P14	FBS 2,5 BRIDGE 5	3030190	PHOENIX	0QE	1	12.2
P14	FBS 2,5 BRIDGE 2	3030161	PHOENIX	0QE	1	13.3
P15	FBS 2,5 BRIDGE 5	3030190	PHOENIX	0QE	1	12.2
P15	FBS 2,5 BRIDGE 2	3030161	PHOENIX	0QE	1	13.4
P2	FBS 2,5 BRIDGE 2	3030161	PHOENIX	0QE	1	11.4
P3	FBS 2,5 BRIDGE 2	3030161	PHOENIX	0QE	1	11.5
P4	FBS 2,5 BRIDGE 2	3030161	PHOENIX	0QE	1	11.6
P5	FBS 2,5 BRIDGE 2	3030161	PHOENIX	0QE	1	11.7
P6	FBS 2,5 BRIDGE 2	3030161	PHOENIX	0QE	1	11.8
P7	FBS 2,5 BRIDGE 2	3030161	PHOENIX	0QE	1	12.4
P8	FBS 2,5 BRIDGE 2	3030161	PHOENIX	0QE	1	12.7
P9	FBS 2,5 BRIDGE 2	3030161	PHOENIX	0QE	1	12.8
XT1-	CLIP FIX	3022276	PHOENIX	0QE	1	11.3
XT1-	D-ST 2,5 TWIN	3030488	PHOENIX	0QE	1	11.8
XT1-U1	ST 2,5 TWIN	3031241	PHOENIX	0QE	1	11.3
XT1-U1	ST 2,5 TWIN	3031241	PHOENIX	0QE	1	11.4
XT1-U2	ST 2,5 TWIN	3031241	PHOENIX	0QE	1	11.6
XT1-V1	ST 2,5 TWIN	3031241	PHOENIX	0QE	1	11.4
XT1-V1	ST 2,5 TWIN	3031241	PHOENIX	0QE	1	11.5
XT1-V2	ST 2,5 TWIN	3031241	PHOENIX	0QE	1	11.7
XT1-W1	ST 2,5 TWIN	3031241	PHOENIX	0QE	1	11.5
XT1-W2	ST 2,5 TWIN	3031241	PHOENIX	0QE	1	11.8
XT2-	STTBS 2,5	3038464	PHOENIX	0QE	1	12.10
XT2-11.	STTBS 2,5	3038464	PHOENIX	0QE	1	12.2
XT2-13.	STTBS 2,5	3038464	PHOENIX	0QE	1	12.7

			Project : CNEC . U . . 45 . . 06.M2.V400F3H50N	Sheet 16
			Internal order : 048012732	Of 17
			Customer : 0480 Customer order :	
			Title : DISTINTA MATERIALI MORSETTI	
Rev.	Date	Signat.	Modification	15 ◀ ▶ 17
			Draughtsman : L.L.	Date : 20/02/2026

COMPONENTS DESCRIPTION

COMPONENT	
Fan	Qty: 6
Model	ZIEHL-ABEGG
3504223-01 AssVGS Z-UC63	
NOMINAL DATA 1 Fan	
Frequency	50/60 [Hz]
Vn	400 [Vac]
In	6 [A]
Pn	3.7 [kW]
Cos(ϕ)	0.89
Fan speed	1600 [rpm]
Tcr	-35§65 [°C]
Protection class	IP55
WORKING POINT DATA 6 Fans	
Reg.%	100
Ib	33.8 [A]
Pb	20.86 [kW]
Cos(ϕ)	0.89
UpM	1600 [rpm]

LAYOUT

